

The professional machine – Basic version

The professional machine for supreme claims. For drills from Ø 3 – 60 mm. Precise, no servicing, 4 point linear guideways. Spindle system with adjustable needle bearings. Prism quick action system.

- ✓ clamping range from Ø 3 – 40 mm
- ✓ range extension to 60 mm by extra prism
- ✓ clearance- and top angle to be adjusted stepless
- ✓ patented prism reversing system
- ✓ web thinning
- ✓ optional: countersink-and cutter grinding adaptor SZVR (see page. 16)



Introductory video:

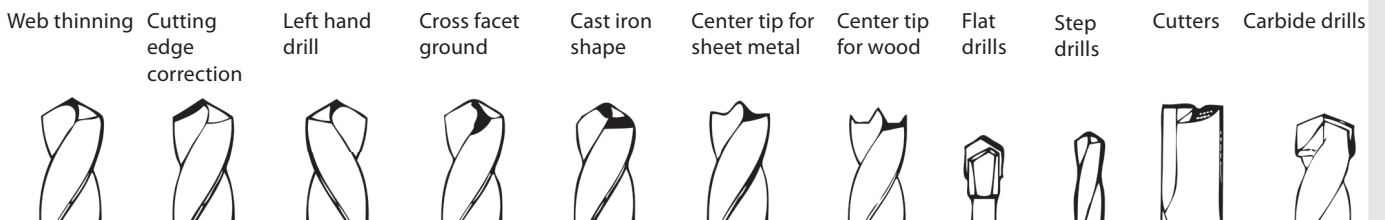


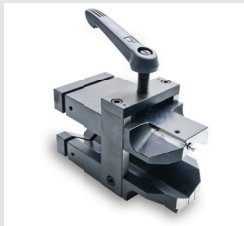
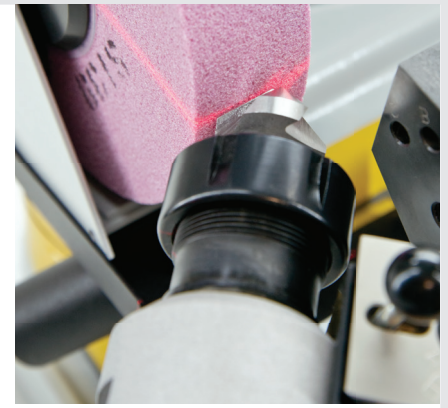
TECHNICAL DATA

Clamping range: Ø 3 to 60 mm
 Corundum grinding wheel: 200 x 40 x 51 mm
 Motor: 230 V, 50 Hz, 0,37 kW (also available in 400 V, 110 V, 60 Hz)
 Revolutions: 2800 rpm⁻¹
 Weight net: 59 kg
 Clearance- and top angle: to be adjusted stepless
 Dim (L x W x H): 570 x 330 x 520 mm

BASIC VERSION

- Prism from Ø 3 to 40 mm
- Corundum grinding wheel Ø 200 mm grit 60
- Precision optical lens lighted
- Grinding wheel dresser with rotating diamond
- Granite base slap





Extra prism

Item No. 10598 Clamping range Ø 20 - 40 mm
Item No. 10602 Clamping range Ø 40 - 60 mm



Diamond grinding wheel

Item No. 10627 Ø 200 mm incl. support

CBN-grinding wheel

Item No. 17480 Ø 200 mm incl. support



Cleaning- and sharpening stone

Item No. 15855 for diamond wheels



Corundum grinding wheel

	Grit 46	Grit 60	Grit 100	Grit 180
200x40x51	Item No. 10612	Item No. 10613	Item No. 10614	Item No. 10615
200x20x51		Item No. 10687	Item No. 10688	Item No. 10689
200x 8x51		Item No. 10691	Item No. 10692	Item No. 10693



Distance-ring

Item No. 10690 for 20 mm grinding wheels
Item No. 10694 for 8 mm grinding wheels



Item No. 10621 Magnetic depth stop for cutters



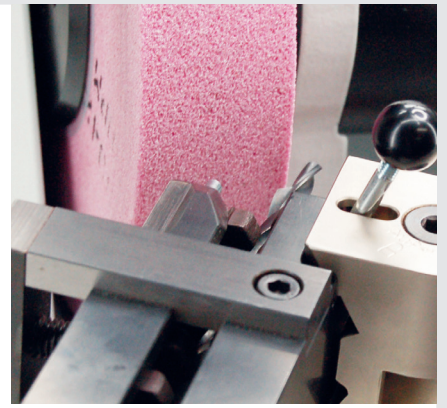
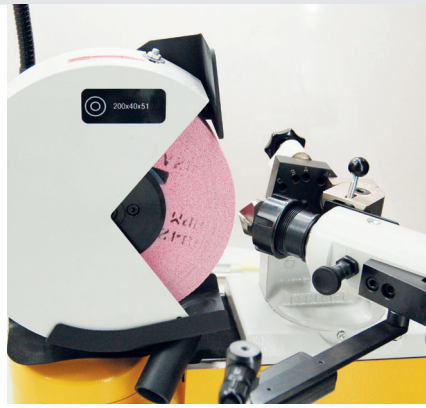
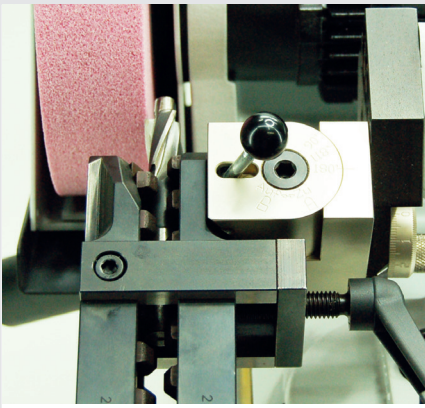
Item No. 10622 Cutting rosette for cutters



Item No. 10623 Stop dog for long drills



Item No. 10685 Handle for motor feed



Item No. 10646 Adapter for dust exhaust Ø 32 mm



Morse taper sleeves

- Item No. 14483** for short MK-drills, MK 1
- Item No. 14484** for short MK-drills, MK 2
- Item No. 14485** for short MK-drills, MK 3



Countersink sharpening device SVR 31

Item No. 10583 incl. collet 10 mm



Collet set

Item No. 14348 for SVR 31 (Ø 6, 8, 12 mm)



Item No. 10604 Nut for extra collets



Grinding wheel fixture

Item No. 10616 with cone



Item No. 14721 Machine stand

Item No. 12385 Adaptor cable 230 V Schuko / 400 V CEE



Cutter and countersink attachment SZVR

Item No. 11280 for 3 edged countersinks from Ø 6-31 mm or up to MK3, and 1-4 lip cutters for sharpening the face max Ø 20 mm, incl. 10 mm collet

DRILL GRINDING MACHINE BSG 60

Full range equipment

ITEM NO. 14369

The professional machine in the all-around carefree package

- ✓ for twist drills Ø 3 to 60 mm
- ✓ countersinks up to MK3
- ✓ and end mills



Introductory video:



SPARE PART LIST SEE PAGE 11+12

FULL RANGE EQUIPMENT:

- Clamping prism from 3 to 40 mm (through additional prism up to 60 mm)
- Corundum grinding wheel Ø 200 mm grit 60
- Cutter and countersink sharpening device SZVR
- Grinding wheel dresser with rotating diamond
- Collet set, 7 pieces for SZVR
- DVD-manual
- Crank handle
- Adaptor for dust exhaust Ø 32 mm
- Precision optical lens lighted
- Granite base slap

